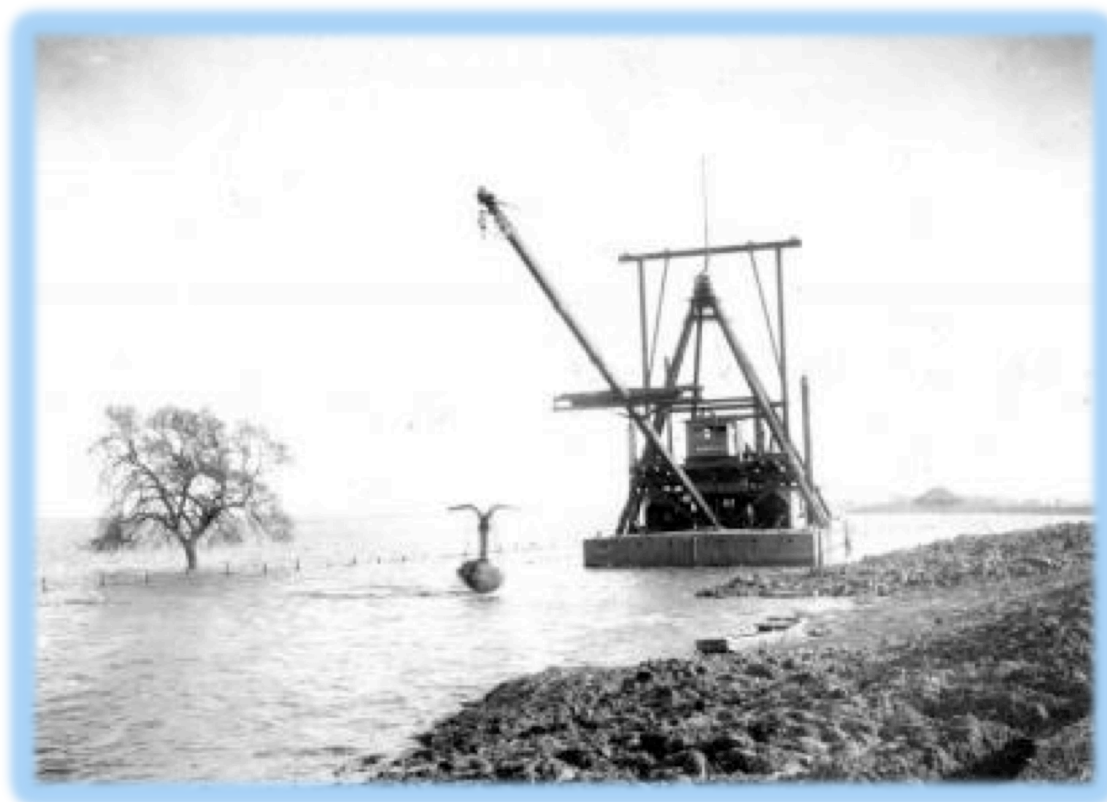


Reclamation District 2030 McDonald Island

Emergency Operations Plan
(California Water Code Section 9650)

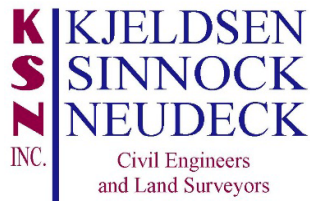


**San Joaquin Operational Area
December 2015**

This document was last updated on December 14, 2015.

Prepared by KJELDTSEN SINNOCK & NEUDECK, INC. for Reclamation District 2030 – McDonald Island, with funds awarded under the California Department of Water Resources Flood Emergency Response Grant Program—Delta, Contract No. 4600010754.

This document satisfies the requirements of California Water Code Section 9650.



Kjeldsen, Sinnock & Neudeck, Inc.
711 N. Pershing Ave
Stockton CA 95203
KSN by Phone:
(209) 946-0268
(916) 403-5900

Plan Promulgation

December 14, 2015

To whom it may concern:

This document and accompanying annex map, having been duly reviewed and approved by the Board of Trustees of Reclamation District 2030 – McDonald Island (hereinafter referred to as Reclamation District 2030), is hereby promulgated as the official emergency plan of the District. District personnel are hereby directed to use this plan as the basis for emergency response to flood events. This plan meets the safety plan requirements of Section 9650 of the California Water Code and is compliant with the National Incident Management System and National Response Framework.

The District Counsel/Secretary is hereby directed to distribute this plan to outside agencies in accordance with the Record of Initial Distribution to ensure proper inter-agency coordination during emergency operations. Copies of the plan shall be provided to additional agencies upon request.

The District Counsel/Secretary and District Engineer shall review this plan and accompanying annex annually for needed changes and updates. The District Counsel/Secretary and District Engineer are authorized to make routine updates and changes to the plan required by changes in district operations and personnel and changes to outside agency plans that affect district operations.

The Board of Trustees of Reclamation District 2030 shall review this plan once every three years and after any major flood event where the plan was used to guide District response. The District Counsel/Secretary shall maintain a record of Board plan reviews and approval actions in accordance with District documentation procedures and policies.

Sincerely,

Dennis Gardemeyer, President
Board of Trustees
Reclamation District 2030

Record of Changes

Revision #	Sections Revised	Date of Distribution	Name of Approving Authority

Record of Initial Distribution

Agency Name	Address	Date Provided
City of Stockton Fire Department/OES	425 N. El Dorado Stockton, CA	
San Joaquin County Office of Emergency Services	2101 E. Earhart Stockton, CA	
Department of Water Resources Flood Operations Branch	3310 El Camino Ave Sacramento, CA	
California Office of Emergency Services, Inland Region	630 Sequoia Pacific Blvd. Sacramento, CA 95811	
Central Valley Flood Protection Board	3310 El Camino Ave., Rm 151 Sacramento, CA 95821	

Table of Contents

PLAN PROMULGATION	2
RECORD OF CHANGES	3
RECORD OF INITIAL DISTRIBUTION	4
SECTION 1 - PLAN INTRODUCTION	7
1.1 PURPOSE	7
1.2 SCOPE	7
1.3 PLAN STRUCTURE	7
SECTION 2 - CONCEPT OF OPERATIONS	8
2.1 SITUATION OVERVIEW	8
2.2 GENERAL APPROACH TO SEASONAL FLOOD OPERATIONS	8
2.2.1 <i>Routine Preparedness and Infrastructure Maintenance</i>	8
2.2.2 <i>Monitoring and Analysis</i>	8
2.2.3 <i>Alerting, Activation, and Initial Response</i>	9
2.3 PUBLIC ALERT AND WARNING	9
2.4 FLOOD FIGHT OPERATIONS	10
2.5 FEDERAL AND STATE DISASTER ASSISTANCE	10
SECTION 3 – ORGANIZATION AND ASSIGNMENT OF RESPONSIBILITIES	11
3.1 ORGANIZATION	11
3.2 ASSIGNMENT OF RESPONSIBILITIES	11
3.2.1 <i>Make Legal and Financial Commitments on behalf of District</i>	11
3.2.2 <i>Represent District in Operational Area Emergency Management Committee</i>	12
3.2.3 <i>Provide Public Information</i>	12
3.2.4 <i>Maintain Emergency Equipment, Supplies, and Resources</i>	12
3.2.5 <i>Monitor Water Conditions, Elevations, and Forecasts</i>	12
3.2.6 <i>Activate and/or Direct District Personnel During Emergency Operations</i>	12
3.2.7 <i>Document Expenditures, Emergency Actions, and Requests for Mutual Aid</i>	12
SECTION 4 – DIRECTION, CONTROL AND COORDINATION	14
4.1 MANAGEMENT AND CONTROL OF DISTRICT OPERATIONS AND COORDINATION WITHIN DISTRICT	14
4.1.1 <i>Management and Policy</i>	14
4.1.2 <i>District Incident Command</i>	14
4.1.3 <i>Incident Command Facilities</i>	14
4.2 MANAGEMENT AND COORDINATION WITH OTHER JURISDICTIONS	14
4.2.1 <i>Unified Flood Fight Command Post</i>	14
4.2.2 <i>San Joaquin Operational Area Emergency Operations Center</i>	15
4.2.3 <i>State-Federal Flood Operations Center</i>	15
4.2.4 <i>San Joaquin Operational Area Joint Information Center</i>	17
SECTION 5 - COMMUNICATIONS	18
5.1 COMMUNICATIONS ORGANIZATION	18
5.2 DISTRICT COMMUNICATIONS	18
5.3 COMMUNICATIONS WITH OTHER JURISDICTIONS	18
5.3.1 <i>San Joaquin Operational Area EOC</i>	18
5.3.2 <i>Department of Water Resources State-Federal Flood Operations Center</i>	18
SECTION 6 - LOGISTICS AND FINANCE/ADMINISTRATION	19
6.1 MUTUAL AID	19

6.2	RESOURCES	19
6.3	PROCUREMENT	19
6.4	LOGISTICS FACILITIES.....	19
6.5	FINANCE AND ADMINISTRATION	19
SECTION 7 - PLAN DEVELOPMENT AND MAINTENANCE.....		20
7.1	PLAN DEVELOPMENT AND MAINTENANCE	20
7.2	TRAINING AND EXERCISES	20
7.3	PLAN EVALUATION	20
SECTION 8 - AUTHORITIES AND REFERENCES.....		21
8.1	FEDERAL	21
8.2	STATE.....	21
8.3	LOCAL	21
ATTACHMENT 1		22
	RECLAMATION DISTRICT 2030 EMERGENCY RESPONSE AND TRAINING POLICY.....	22
ATTACHMENT 2		24
	RECLAMATION DISTRICT 2030 DELEGATION OF AUTHORITY LETTER	24
ATTACHMENT 3		25
	EMERGENCY RESOLUTION TEMPLATE	25

Section 1 - Plan Introduction

1.1 Purpose

The purpose of this Flood Safety Plan is to ensure the effective performance of Reclamation District 2030 responsibilities in a flood emergency in collaboration with other jurisdictions performing emergency functions within and around the District. This plan is to be used in conjunction with the emergency operations plans of the State of California and the San Joaquin Operational Area (SJOA) to facilitate multi-jurisdictional coordination within District boundaries. Although this is a public document, specific procedures and information of a sensitive nature as well as personal information may be edited out of publicly available versions. The full document is subject to restricted-use handling procedures. This plan meets the requirements of Section 9650 of the California Water Code.

1.2 Scope

Reclamation District 2030 is an independent jurisdiction with responsibility for the operation and maintenance of the levee system within its jurisdictional boundaries. This District emergency operations plan covers only detailed procedures for District responsibilities. Operational plans of other jurisdictions with public safety responsibilities within the District are referenced in this plan.

This plan will cover in detail the following;

- District Flood Preparedness Procedures
- District Levee Patrol Procedures
- District Flood Fight Procedures
- District Flood Water Removal Procedures
- District Recovery and After-Action Procedures

1.3 Plan Structure

This Flood Safety Plan is structured as a traditional functional emergency operations plan in accordance with Comprehensive Preparedness Guide (CPG) 101 v. 2.0 issued by the Federal Emergency Management Agency (FEMA). Consistent with that guidance, and because of the District's limited responsibilities and lack of internal departments, this emergency operations plan consists of this Basic Plan and one hazard-specific annex, Annex A – Flood Contingency Map (Annex A). The District's existing flood contingency map will constitute Annex A containing the District's specific flood response procedures. The most current flood contingency map for the district can be accessed at the SJOA flood contingency map website (See Figure 1.1).

The screenshot shows the website for SJOA Flood Contingency Mapping. It features a navigation menu on the left with options like 'Interactive Maps', 'Static Maps', 'Data & Services', 'Disclaimer', 'Contact Us', and 'Links'. The main content area is titled 'O.E.S. Flood Contingency Mapping' and includes a 'VISUAL INDEX OF AVAILABLE MAPS' showing a map of the San Joaquin Operational Area with various colored regions. Below the map is a 'TABULAR INDEX OF AVAILABLE MAPS' table.

Official Map Name	Map PDF	Preliminary Engineering Designs PDF
Beacon Island	Quand 12-09-01	N/A
Boggs Tract	N/A	N/A
Brack Canal Tract	Quand 11-7-01	N/A
Central Stockton	N/A	N/A
Little Islands North	N/A	N/A
Eight Mile Corridor	Quand 08-20-01	N/A
Holmes 1/2 Corridor	Quand 05-20-01	N/A
Good Tract	N/A	N/A
McDonald Island	Quand 09-01-01 126-126	N/A
New Hope Tract	Quand 05-15-01	N/A
North Stockton	Quand 05-04 117-04	N/A
Old River	N/A	N/A
RS1668 Union Village West	Quand 04-05-01	N/A
RS17 Haggable	N/A	N/A
RS174 Segment Barnhart	Quand 04-04-01	N/A
Pringle Tract	Quand 04-04-01	N/A
Roberts Island	Quand 05-17-01	N/A
Rough And Ready Island	N/A	N/A
San Joaquin River East Bank	Quand 05-17-01	N/A
San Joaquin River West Bank	Quand 05-04 117-04	N/A
Smith Water Tract	N/A	N/A
South Stockton	Quand 11-7-01	N/A
Station Island	N/A	N/A
Stewart Woodland Tract	N/A	N/A
Timor Island	Quand 11-8-01	N/A
Victoria Canal	Quand 11-8-01	N/A
Woods Riverwood Tract	N/A	N/A

www.sjmap.org/oesfcm
 maintained by San Joaquin
 Operational Area

Figure 1.1

Section 2 - Concept of Operations

2.1 Situation Overview

See the SJOA Hazard Mitigation Plan for a comprehensive flood risk assessment for the County of San Joaquin. See Annex A for District boundaries, levees, pumping stations, supply depots, historical flooding summary, locations of past breaches and areas of historic seepage or erosion, topography, and characteristics of waterways fronting District levees.

Reclamation District 2030 is an active District located west of the City of Stockton and responsible for flood protection and levee maintenance of the island. Reclamation District 2030 is bordered by Bacon Island on the west, Medford Island on the north, Rindge Tract and Lower Roberts Island on the East and Lower Jones Tract on the south. Reclamation District 2030 has Pacific, Gas and Electric assets (fuel storage) on the majority of the island.

Reclamation District 2030 has an overall population of less than 20. The only ingress/egress is via ferry.

2.2. General Approach to Seasonal Flood Operations

District personnel will carry out routine preparedness activities at the beginning of flood season as described in below. Annex A of this plan describes the concept of operations for active District flood fight activities. Section 3, Organization and Responsibilities, of this Basic Plan describes authorities and responsibilities for performing routine and emergency activities.

2.2.1 Routine Preparedness and Infrastructure Maintenance

District performs the following routine preparedness actions.

- Weekly Inspection of District levees on a routine basis
- Ongoing and active routine baiting for ground rodents
- Ongoing and routine vegetation control program
- Annual inspection and inventory of District flood fight supplies
- Annual joint inspection of one mile stretch of levee with State inspectors
- Periodic joint inspection of levees with Federal inspectors
- Annual inspection and maintenance of access control gates on levees

District does not own or maintain pumping stations for internal drainage control. There are multiple privately owned culverts or through levee pipes that exist within District.

2.2.2 Monitoring and Analysis

The District will monitor and analyze water conditions, elevations, and forecasts for waterways affecting District levees throughout flood season for the purpose of promptly identifying heightened threats to the integrity of District levee systems. The objective of this monitoring effort is to identify conditions that warrant additional actions beyond routine flood season preparedness activities.

The District will use the following gauges and information sources in its monitoring effort:

Primary Reference Gauge:

Venice Island
Datum NAVD 88

Secondary Reference Gauge:

Benson's Ferry
Mossdale
Vernalis
Datum NAVD88

2.2.3 Alerting, Activation, and Initial Response

The following actions will be taken when the trigger condition is identified by District personnel. These actions may be taken by District personnel at any time or tidal condition if it is felt that conditions affecting the levees and drainage system warrant such action.

Action	Trigger Condition
Alert the District Board of Trustees and personnel; Official prediction that 8.0' (NAVD 88 datum) tide will be reached at Venice Island Gauge	Issue Delegation of Authority letter appointing District Incident Commander
Activate/Hire District personnel and initiate periodic focused levee inspections	El. 8.0' (NAVD 88) tide at Venice Island Gauge
Initiate 24-hour continuous levee patrols	El. 9.0' (NAVD 88) at Venice Island Gauge
Contact San Joaquin County Sheriff and San Joaquin OES	Potential threat to levee integrity or if District begins patrol
Contact the State-Federal Flood Operations Center	Identified problem on levee

The District does not use “phases” where objective conditions trigger a group of actions. Each action indicated will be taken upon reaching the trigger condition shown or if District personnel feel it is warranted. As noted below, the District Engineer and District personnel are responsible for monitoring objective conditions affecting the District.

District personnel will take all of the above actions upon the identification, or verified report, of any out of the ordinary condition on a District levee that presents a potential risk of failure.

2.3 Public Alert and Warning

The District will promptly notify jurisdictions responsible for alerting and warning of the general public upon identification of a threat to District levees. The District will provide detailed information on the characteristics of the threat and will assist, to the extent possible, with notification of the public if requested. All alert and warning of the general public will be carried out in accordance with the plans of protected jurisdictions.

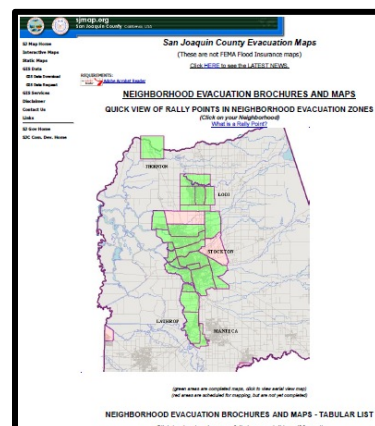
Jurisdictions responsible for alerting and warning of the general public within District.

- City of Stockton County of San Joaquin

Alerting and warning will be conducted jointly by these jurisdictions through the SJOA using the procedures contained in the SJOA Warning Annex (see www.sjgov.org/oes). The District will provide a representative to the Operational Area (OA) and SJOA Joint Information Center (JIC) to assist with alert and warning messages if requested.

Evacuation maps and brochures for the public are available at a dedicated website maintained by SJOA (See Figure 2.1). These maps contain information on receiving alerts and

warnings within the District along with evacuation and safety instructions. According to San Joaquin County OES, no evacuation maps exists for this District, however there may be one developed in the future. Check the following link (see www.sjmap.org/evacmaps) to see if evacuation maps have been developed.



General Public Evacuation maps and Brochures website www.sjmap.org/evacmaps maintained by San Joaquin Operational Area

Figure 2.1

2.4 Flood Fight Operations

Flood fight operations, including levee patrol, will be conducted in accordance with the procedures in this Basic Plan and those shown on Annex A. Annex A displays the District's concept of operations for emergency communications, patrol, flood fight, and dewatering operations. This concept of operations and response procedures will be modified as needed by the District Incident Commander to meet the demands of actual emergency conditions. Plans of jurisdictions with responsibility for warning and evacuation within the District are referenced on Annex A as well as in this plan.

2.5 Federal and State Disaster Assistance

The District's policy is to maintain mitigation and emergency plans and procedures, and the physical condition of its levees at the level required to be eligible for disaster assistance under the federal Stafford Act and PL84-99 program and the California Disaster Assistance Act. Emergency operations will be conducted and documented in compliance with conditions of those programs for reimbursement of disaster expenses. The District has assigned its contract engineering firm to maintain necessary documentation during an emergency and to participate in any available assistance programs after a disaster on behalf of the District.

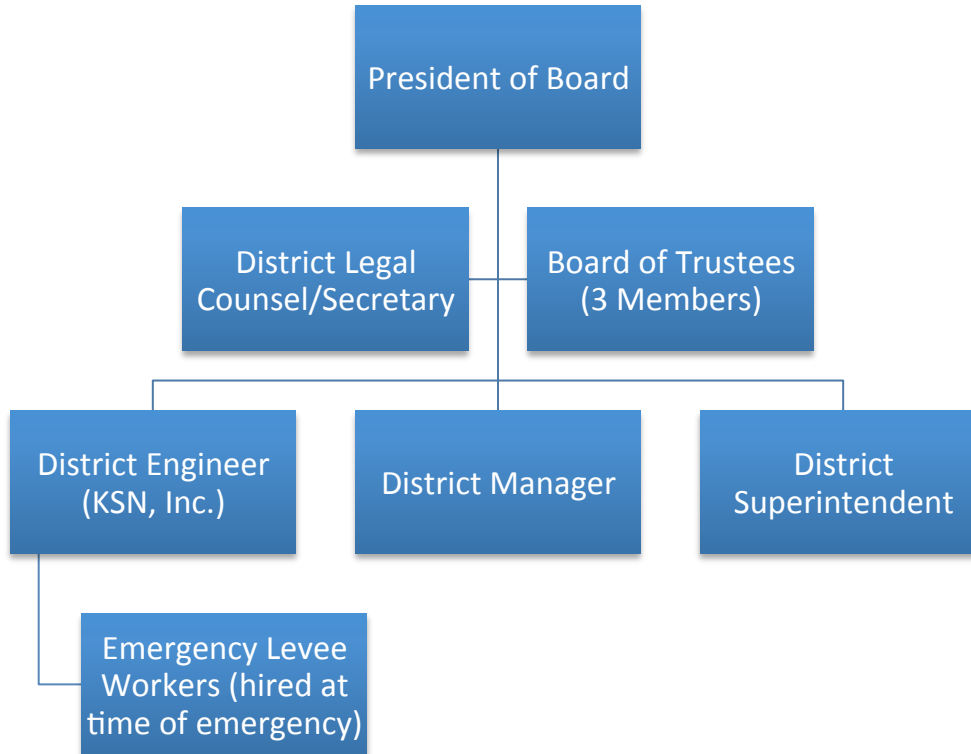
To ensure that the District takes steps to quickly access the recovery process, these actions should be considered if an incident is imminent or occurring:

- PL-84-99:
 - Contact DWR Flood Operations Center
 - Follow-up call to USACE District office that a request was made to DWR
 - Notify OA of PL84-99 request, send copy of written request
- State and other Federal programs:
 - Request San Joaquin County to Proclaim the Existence of a Local Emergency
 - Notify District administration when the Proclamation is established

Section 3 – Organization and Assignment of Responsibilities

3.1 Organization

The District will use its paid, contract, and volunteer personnel as shown below to perform its responsibilities in a flood emergency.



District hires additional staff under the job description of “Emergency Levee Worker” for levee patrol once monitoring efforts indicate that conditions for initiating levee patrol will be reached. Emergency workers will work under the designated District Incident Commander.

3.2 Assignment of Responsibilities

The District Board of Trustees has made the following assignments of authority and responsibility to ensure that needed emergency actions can be taken promptly and efficiently.

3.2.1 Make Legal and Financial Commitments on behalf of District

Any single trustee, the District Engineer, District Superintendent or the District Counsel/Secretary are authorized, once the Board has concurred that a local emergency is occurring, to 1) make a legal or financial commitment on behalf of District during emergency operations and 2) purchase additional flood fight supplies or materials. There is no limit to the commitment that can be made. Any single trustee, the District Engineer, or the District Secretary can take these actions upon recognition of a threat to levee integrity even without prior Board concurrence that a local emergency is occurring, but in this case the Board must be notified of the action within 24-hours.

The District President or Counsel/Secretary will sign written contracts with private vendors or other public agencies stemming from emergency actions as described above.

3.2.2 Represent District in Operational Area Emergency Management Committee

The District Superintendent and/or District Engineer are authorized and responsible for representing the District at unified field commands as may be established by the SJOA. The District Engineer is also responsible for representing the District at the SJOA management committee. These District representatives may speak for the District in matters of the condition of District levees, input to protective action decisions being made by public safety agencies, and any requests to modify or conform District response that come out of the multi-agency coordination process.

The Board President will issue a Delegation of Authority letter (see Attachment 2) confirming and defining these specific authorities at the time of an emergency and formally identify the District Incident Commander and Deputy Incident Commander upon reaching the trigger condition described in Section 2.2.3.

3.2.3 Provide Public Information

The District Counsel/Secretary is authorized to speak to the media on behalf of the District as part of the SJOA JIC.

3.2.4 Maintain Emergency Equipment, Supplies, and Resources

The District Superintendent is authorized and responsible for maintaining District equipment, supplies, and resources for emergency response. The Superintendent will ensure that supplies are maintained at inventory levels set by the Board or at any minimum levels that may be set by the Department of Water Resources guidance or statutes.

3.2.5 Monitor Water Conditions, Elevations, and Forecasts

The District Engineer and District Superintendent are responsible for monitoring water conditions, elevations, and forecasts for the purpose of identifying conditions warranting additional action beyond routine flood preparedness as outlined in this plan.

3.2.6 Activate and/or Direct District Personnel During Emergency Operations

The District Superintendent and District Engineer are authorized and responsible for activating District personnel and resources, for requesting or providing mutual aid assistance from public agencies, and for supervising District personnel, contractors, and/or mutual aid resources assigned to District for 1) levee patrol, 2) flood fight operations, and 3) District de-watering operations.

The Board President will issue a Delegation of Authority letter (see Attachment 2) confirming and defining these authorities as noted in Section 3.2.2.

The Board will use the emergency resolution template (See Attachment 3) to proclaim a local emergency.

3.2.7 Document Expenditures, Emergency Actions, and Requests for Mutual Aid

The District Engineer is authorized and responsible for maintaining necessary documentation of emergency expenditures, damage to District infrastructure, and use of

supply inventories in accordance with the requirements of federal and state disaster assistance programs.

The District Engineer is authorized and responsible for the preparation and submission of disaster assistance claims during the recovery period through all federal and state disaster assistance programs that may be applicable and relevant to District costs.

Section 4 – Direction, Control and Coordination

4.1 Management and Control of District Operations and Coordination within District

District personnel authorized and responsible for carrying out the actions outlined in Section 3, Organization and Responsibilities, will use the direction, control, and coordination facilities and processes described in this section. Communications and logistics systems for command, coordination, and response are described in Sections 5 and 6.

District personnel will use the National Incident Management System (NIMS), and the Standardized Emergency Management System (SEMS), to organize District response activities. District personnel will comply with the procedures of the San Joaquin County Unified Flood Fight Command to which the District is assigned, the SJOA Multi-Agency Coordination System (MACS) or any other “as needed” command structure put in place by local officials for purposes of inter-agency coordination.

4.1.1. Management and Policy

The District shall maintain direction and control of District operations during emergency periods. The District Board of Trustees shall meet and confer as deemed necessary by the President during emergency operations to perform their policy making and financial responsibilities during emergency response operations. Board meetings will occur in the field or if needed at the office of the District.

The Board President will issue a Delegation of Authority letter (see Attachment 2) upon reaching the trigger condition indicated in Section 2.2.3.

4.1.2 District Incident Command

The District will appoint one incident commander to manage all incidents occurring on the District levee system as an “incident complex” during any single disaster event as allowed in NIMS protocols. The District will operate on a 24-hour operational period.

4.1.3 Incident Command Facilities

The District does not maintain pre-identified facilities for hosting emergency activities being undertaken by District personnel. The District’s counsel has facilities for meetings. District activities will be organized and coordinated in the field or at other incident command facilities established by public safety agencies or the SJOA.

4.2 Management and Coordination with Other Jurisdictions

The District will ensure that proper management and coordination is maintained with 1) other public agencies and jurisdictions operating within the District, 2) neighboring Reclamation Districts, and 3) the SJOA. The following procedures will be followed to accomplish this function.

4.2.1 Unified Flood Fight Command Post

The County of San Joaquin has established four pre-planned unified flood fight commands with pre-identified command post locations to facilitate coordination and mutual aid between neighboring reclamation Districts and supporting city/county, state, and federal agencies. The District Superintendent or District Engineer will report to the District’s assigned unified flood fight command to coordinate the development and implementation of

incident action plans. Unified situation assessment, resources, and tactical planning of multi-agency flood fight activities will take place within this unified command. See Unified Flood Fight Command Map at www.sjmap.org/oesfcm.

Reclamation District 2030 is a member of the CENTRAL DELTA UNIFIED FLOOD FIGHT COMMAND established by the SJOA. The Central Delta Unified Flood Fight Command meets at the Holt Station on Reclamation District 2116. The boundaries and assignments to this command may be viewed on the SJ County Unified Flood Fight Command Map available at www.sjmap.org/oesfcm. See Figure 4.1.

4.2.2 San Joaquin Operational Area Emergency Operations Center

The County of San Joaquin maintains and hosts the SJOA emergency operations center (EOC) at 2101 E. Earhart Avenue, Stockton, in the Robert J. Cabral Agricultural Center. There could be other emergency facilities established under the OA-EOC located in separate locations.

The OA Multi-Agency Coordination Group (MAC Group) may be activated to assist the EOC Director prioritize incidents for allocation of scarce resources, including mutual aid, assists Planning/Intelligence in information sharing, and conduct resource coordination processes in accordance with the procedures maintained by San Joaquin County Office of Emergency Services. This group works closely with the OA-EOC Logistics Section.

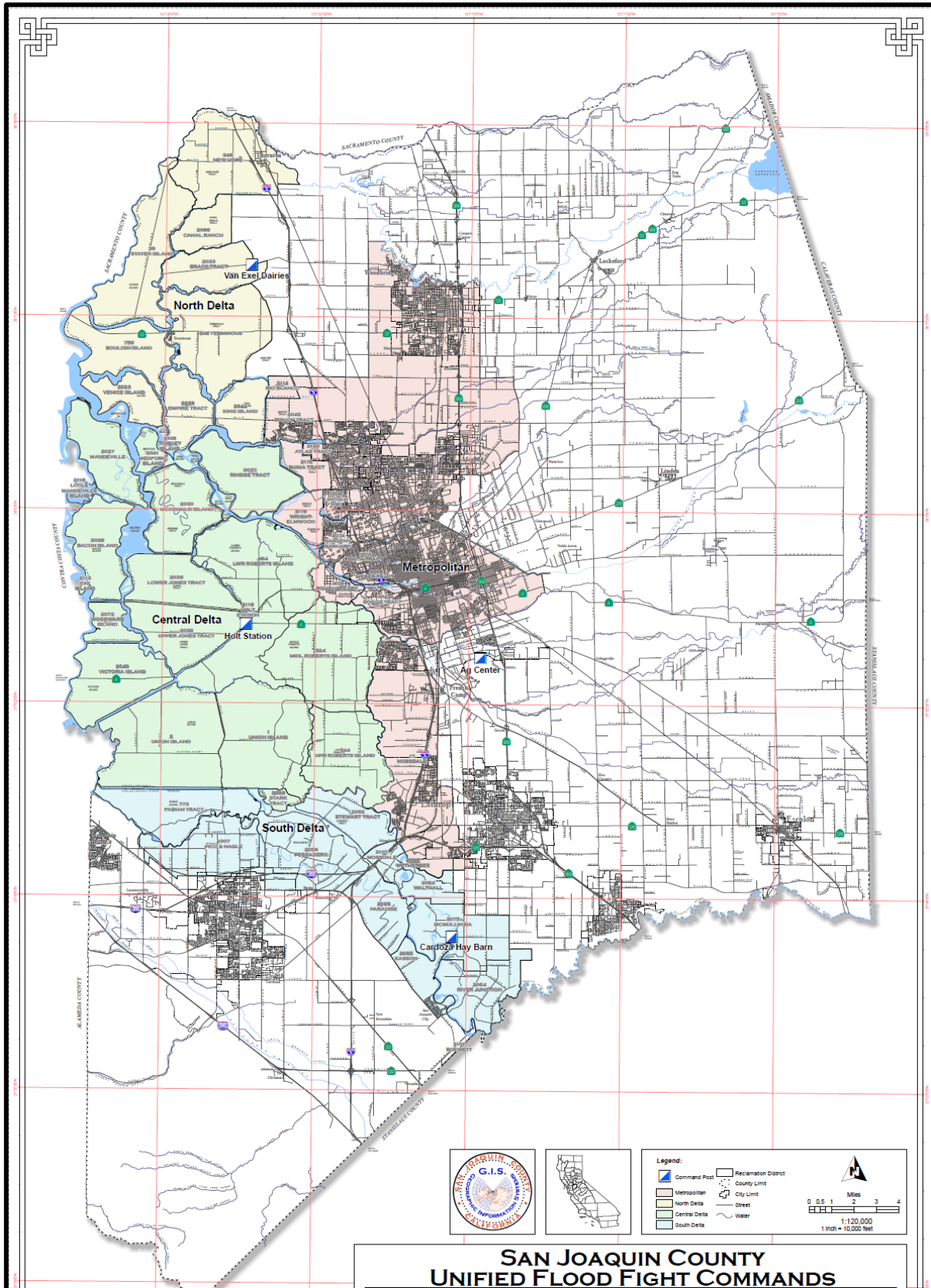
The SJOA Planning/Intelligence Section will provide disaster intelligence and situational status to participating jurisdictions upon activation in an emergency. This District will participate as needed in this disaster intelligence and information sharing process. See www.sjgov.org/oes for relevant SJOA plans.

Reclamation District 2030 is a signatory to the SJOA Agreement and as such, its District Engineer and/or Superintendent will participate in SJOA multi-agency coordination processes and procedures on behalf of the District. General travel times from District to the SJOA emergency operations center is 20-30 minutes. District representative may remotely communicate with the SJOA EOC through cellular telephone.

4.2.3 State-Federal Flood Operations Center

The Department of Water Resources has special authority under Water Code Section 128 to assist reclamation Districts with flood fight operations. The Department of Water Resources maintains the State-Federal Flood Operations Center (FOC) to perform these functions and support the operations of other State and Federal agencies. The District will maintain communications with the FOC in order to receive and provide information with that facility and to request technical assistance. The District will communicate with the flood operations center through telephone systems or at Central Delta Unified Flood Fight Command multi-agency coordination activities where FOC representatives are present.

Figure 4.1 Unified Flood Fight Commands



4.2.4 San Joaquin Operational Area Joint Information Center

Information to the general public and jurisdictions will also be coordinated, planned, and carried out through the SJOA JIC. The District will assist with public information as requested through the OA. See www.sjgov.org/oes for relevant SJOA plans and procedures.

The District will provide a Public Information Officer (PIO) as requested who will have authority to approve information releases. The District PIO will identify the location and schedule of the JIC from the SJOA PIO at the beginning of the flood event.

Section 5 - Communications

5.1 Communications Organization

The District will maintain adequate communications equipment to implement this emergency plan. This section identifies equipment and/or systems available for communications.

1. Between District personnel, contractors, and other staff working under District supervision
2. With other public agencies operating within the District
3. With neighboring Reclamation Districts
4. With the SJOA EOC
5. With the State Flood Operations Center

5.2 District Communications

The District does not own or operate communications equipment. The District will rely on personal cell phones of its staff and trustees to maintain communications between the Board of Trustees, the District Engineer, the District Superintendent and other response staff that may be hired during the emergency period. In the event of failure of cellular telephone systems the District will use messengers to transmit information between its staff and other jurisdictions as well as regularly scheduled coordination meetings of the field unified commands and the SJOA organization.

5.3 Communications with Other Jurisdictions

The District will maintain communications with other jurisdictions by cellular telephone and by participation in meetings of the Central Delta Unified Flood Fight Command. The OA may assign radio or phone communications equipment to the District if this will provide reliable contact.

5.3.1 San Joaquin Operational Area EOC

The District will maintain communications with the SJOA EOC by cellular telephone and participation in scheduled meetings of the SJOA management group. District will maintain telephone numbers assigned by SJOA for use by reclamation Districts.

5.3.2 Department of Water Resources State-Federal Flood Operations Center

The District will communicate with the Flood Operations Center by cellular telephone. Additional communications equipment may also be provided to ensure contact.

Section 6 - Logistics and Finance/Administration

6.1 Mutual Aid

The District is a signatory to the California Master Mutual Aid Agreement and the SJOA Agreement. District personnel will follow the processes outlined in those documents for requesting and providing mutual aid. The SJOA Agreement and San Joaquin County Ordinances have provisions allowing the SJOA Logistics Section and San Joaquin County Purchasing Agent to acquire and transport, on behalf of the District, resources requested by the District.

Mutual aid requests for technical assistance and services, flood fight crews, supplies and materials, and other resources will be made through the Public Works representative in the SJOA Logistics Section and/or the OA Public Works Mutual Aid Coordinator. See www.sjgov.org/oes for OA plans and procedures.

6.2 Resources

SJOA maintains seven twenty- foot containers with flood fight supplies that the district can draw on through the SJOA Agreement. Inventory of that resource can be obtained from SJOA.

6.3 Procurement

District maintains standard forms and processes for initiating and executing contracts with appropriately licensed contractors in accordance with Public Contract Code Article 60.5 Sections (20920-20927) and (22050). The District maintains a standard contract form for contracts under \$25,000 which do not require a formal public bid process. The District maintains a separate contract form for all contracts for any improvement or unit of work, or for materials or supplies over \$25,000 adding a formal bidding process whereby the District shall be responsible for awarding to the to the lowest responsive, responsible bidder except as otherwise provided below.

In the event of any emergency, the District may negotiate and award a contract for the construction of work to prevent damage or repair damaged works without advertising for bids and expend any sum reasonably required in the emergency. If notice for bids to let contracts will not be given, the District shall comply with Chapter 2.5 (commencing with Section 22050).

6.4 Logistics Facilities

See Annex A for locations of pre-planned delivery points, locations of District supplies, and District supply staging areas and points.

6.5 Finance and Administration

The District maintains financial and administrative records associated with emergency response in accordance with *44 C.F.R. Part 13--Uniform Administrative Requirements For Grants And Cooperative Agreements To State And Local Governments*. Emergency response and construction records, including field reports, procurement and construction management files are maintained by both the District and the District's engineer and are retained as prescribed by the grant authority. District maintains a safety plan for employees and work rules as appropriate.

Section 7 - Plan Development and Maintenance

7.1 Plan Development and Maintenance

The District Counsel/Secretary, Superintendent, and Engineer are responsible for overseeing the development of the Reclamation District 2030 Emergency Operations Plan. The District Engineer will maintain the District Flood Contingency Map which constitutes Annex A of the Plan. The District Counsel/Secretary, Superintendent, and Engineer are responsible for periodic review of the District Emergency Operations Plan and Annex A to determine the need for revisions or updates.

The District Board will approve this plan when initially completed. The District President is authorized to approve routine updates and revisions. The District Board will review and re-approve the Emergency Operations Plan and Annex A at least every three years. Revised plans must be reviewed and approved by protected cities and the County.

7.2 Training and Exercises

The District will maintain a training program to implement this emergency operations plan and to meet minimum federal and state requirements for disaster reimbursement. All District training will comply with the National Incident Management System (NIMS) and the Standardized Emergency Management System (SEMS). The District Emergency Response and Training Policy explains the District training program in detail (See Attachment 1).

District employees will receive training on the District EOP – Basic Plan and Annex A.

District personnel will participate in internal exercises and exercises sponsored by the SJOA jurisdictions.

7.3 Plan Evaluation

Reclamation District 2030 personnel will prepare a written After-Action Report (AAR) after any District declared emergency affecting District levees. The District Counsel/Secretary is responsible for the preparation of this report. The Board will review and approve the AAR which will briefly describe District operations, response problems that arose, and damage sustained by the District. The AAR will also contain recommendations for improving District emergency operations in the future. The Board will provide direction to staff as to the preparation of changes, additions, or revisions to the District emergency operations plan.

Section 8 - Authorities and References

8.1 Federal

Federal Civil Defense Act of 1950 (Public Law 920, as amended)

Robert T Stafford Disaster Relief and Emergency Assistance Act of 1988 (Public Law 93-288, as amended)

8.2 State

California Emergency Services Act (Chapter 7, Division 1 of Title 2 of the Government Code)

Standardized Emergency Management System Regulations (Chapter 1 of Division 2 of Title 19 of the California Code of Regulations)

8.3 Local

Ordinance Code of San Joaquin County 1995, Title 4 – Public Safety, Division 3. – Civil Defense And Disaster, Section 4-3008

Attachment 1

Reclamation District 2030 Emergency Response and Training Policy

Reclamation District 2030 Board of Trustees hereby adopts the National Incident Management System (NIMS) for organizing emergency response activities. The Board further establishes the following emergency response and training policies.

Emergency Response

In an emergency, the District Board of Trustees is responsible for determining general response policy and performing financial oversight. The District Superintendent and District Engineer are responsible for organizing District response activities, supervising any hired staff or contractors working for the District, and for coordinating with outside agencies. The District hereby establishes the position of Emergency Levee Worker for purposes of hiring or re-assigning staff at the time of the emergency for levee patrol.

National Incident Management System Training Guidance

In regard to meeting national training requirements, the District will comply with the provisions of the National Incident Management System Training Program Manual, September 2011 and any subsequent revisions to that document. The District will also comply with California Standardized Emergency Management System (SEMS) training requirements.

The NIMS Training Program Manual indicates that federal training guidance is not absolute and that organizations should tailor their training to the level of incident complexity that their staff would potentially manage. After careful review of the definitions of incident complexity levels shown on Page 16 of the NIMS Training Program Manual, this Board has determined that District responsibilities to patrol its levees and respond to threats to levee structural integrity would require District staff to manage Type 4 incidents. District training requirements outlined below meet NIMS training recommendations for Type 4 incidents (pages 17 and 18, NIMS Training Program Manual, September 2011) and SEMS training requirements.

Reclamation District 2030 Training Requirements

The Board of Trustees hereby establishes the following training requirements for District staff involved in flood emergency operations.

Members of the Board of Trustees shall complete the G-402, Incident Command System Overview for Executives and Senior Officials and the SEMS Executive Course.

The District Superintendent and District Engineer shall complete, at a minimum, the SEMS Introduction, ICS-100 Introduction to the Incident Command System, ICS-200 ICS for Single Resources and Initial Action Incidents, and IS-700 NIMS An Introduction courses to meet Type 4 incident management requirements. In addition, the District Engineer shall complete

IS-800 National Response Framework and IS-701 NIMS MACS course to meet inter-agency coordination responsibilities.

Staff hired or transferred to serve as Emergency Levee Workers at the time of an emergency shall receive a 2-hour RD1 Emergency Safety and NIMS Course that will include a 60 minute summary of the SEMS Introduction, ICS-100 and IS-700 courses and specific safety information for their emergency duties prior to beginning work.

This policy is hereby approved by the Board of Trustees on _____
by the following vote.

By: _____

Title

Attachment 2

Reclamation District 2030 Delegation of Authority Letter

As of _____ hrs, _____, I have delegated the authority and responsibility for the
(Time) (Date)
complete management of the Reclamation District 2030 _____ Incident to
(Name of Incident)
_____ acting as District Incident
(Name of Individuals)

Commander and Deputy Incident Commander respectively.

Instructions

As Incident Commander, you are accountable to me and the Board of Trustees for the overall management of this incident including control and return to District staff and contractors. I expect you to adhere to relevant and applicable laws, policies, and professional standards.

My general considerations for management of the incident are:

1. Provide for safety of District staff.
2. Keep the Board and Board Counsel/Secretary informed of key actions, and the situation.
3. Comply with the RD1 Flood Safety Plan and document conditions requiring its modification

My specific directions and clarifications of authority for this incident are:

- 1.
- 2.
- 3.
- 4.

By: _____
(President, Board of Trustees)

Date

Attachment 3

Emergency Resolution Template

**RESOLUTION OF THE BOARD OF TRUSTEES
OF RECLAMATION DISTRICT NO. ____**

RESOLUTION No. ____

Upon special notice to and consent by the Trustees of Reclamation District No ____, of the County of ____, State of California, an emergency meeting of the Board of Trustees was held at the district offices at **[LOCATION]** on **[DAY and DATE]** at **[TIME]**. The Board agrees that an emergency situation exists which requires immediate action by the District.

[DESCRIPTION OF EMERGENCY EVENT, JUSTIFICATION]

EMERGENCY DECLARATION

WHEREAS, the trustees of Reclamation District ____ have considered the condition of the District Levees and the potential risk of general operation at the expense of public safety and agricultural production; and

WHEREAS, the Trustees have noted that the Sacramento and San Joaquin Delta is and will continue to experience high water levels resulting from heavy rainfalls and runoff, and high winds; and

WHEREAS, the District is experiencing **[DESCRIPTION OF EMERGENCY EVENT]**; and

WHEREAS, after consultation with the District staff and engineers after a visual assessment of the condition of the District levees on **[DATE(S) and TIME(S)]**, the District finds and declares on **[DATE]** that an emergency situation exists and that all necessary and required work to protect the District and the District's levees should be completed at the earliest possible date.

NOW, THEREFORE, BE IT RESOLVED AND ORDERED by the Board of Trustees of the Reclamation District No. ____, as follows:

1. As of **[DATE]** an emergency situation exists within the District and along the District's levees, which requires the District to proceed immediately with the work to prevent the possible flooding of the district, and failure to its levees at the earliest possible time.
2. That the district President, and/or staff be hereby authorized and directed to acquire such materials and equipment and to enter into contracts necessary and appropriate to meet the emergency needs of the district in accordance with Flood Safety Plan.

CERTIFICATION

I, _____, President and trustee for Reclamation District ____ (District) do hereby certify that the above is a true and correct copy of the resolution which the Board of Trustees of the District unanimously adopted on **[DATE]**.

Executed on _____, in _____, California.

District President